

Final Project

CITA 310 – WEB SERVER ADMINISTRATION

Jorge, Nsundidi
SUNY CANTON | 34 CORNELL DRIVE

Table of Contents

TABLE OF FIGURES	3
METHODS OF REDIRECTION	4
1. DNS MANAGER TO REDIRECT	4
1.1 CREATING A NEW ZONE	4
1.2 CREATING A NEW HOST RECORD	5
1.3 RESTARTING DNS SERVER AND DNS CLIENT BEFORE TESTING THE REDIRECTION	7
1.4 REDIRECTING WWW.CITA.COM TO APACHE.ORG	7
2. EDIT THE HOSTS FILE TO REDIRECT WEBSITES	8
1.5 OPEN WINDOWS HOSTS FILE	8
3. REFRESH META TAG AND HTTP REFRESH HEADER[EDIT]	10
1.1 CLEAR OR DISABLE THE PREVIOUS VIRTUAL HOST SCRIPT INSIDE HTTPD.CONF	10
1.2 GO TO HTDOCS FOLDER	11
1.3 EDIT INDEX.HTML FILE BY INSERTING THE SCRIPT REDIRECT	11
1.4 TESTING THE BY TYPING WWW.CITA.COM/	12
4. VIRTUAL HOST AND MOD_PROXY	13
1.1 ENABLING PROXY_MODULES AND HTTP_MODULES	13
1.2 VIRTUAL_HOST AND MOD_PROXY SCRIPT CODE	13
1.3 RESTART THE APACHE AND TEST	14

Table of Figures

FIGURE 1. NEW ZONE	4
FIGURE 2.COMPLETING THE NEW ZONE WIZARD.....	5
FIGURE 3. NSLOOKUP WWW.APACHE.ORG	5
FIGURE 4.NEW HOST.....	6
FIGURE 5.RECORD CREATED	6
FIGURE 6. RESTARTING DNS CLIENT AND DNS CLIENT	7
FIGURE 7. REDIRECTING TO APACHE.ORG.....	7
FIGURE 8. SELECT HOSTS FILE AND OPEN WITH NOTEPAD	8
FIGURE 9. ADDING APACHE IP ADDRESS AND POINT TO CITA ADDRESS.....	8
FIGURE 10. REDIRECTING TO DESTINATION PAGE	9
FIGURE 11. CLEARED HTTPD.CONF	10
FIGURE 12. CLICK INDEX FILE AND EDIT WITH NOTEPAD.....	11
FIGURE 13. INSERTING META TAG AND HTTP REFRESH HEADER	11
FIGURE 14. REDIRECTING THE INDEX PAGE TO APACHE.....	12
FIGURE 15. REDIRECTED AFTER 5 SECONDS.....	12
FIGURE 16. ENABLE LOADMODULE PROXY AND HTTP LOADMODULE	13
FIGURE 17. PROXY SERVER CONFIGURATION SCRIPT	13
FIGURE 18. RESTARTING APACHE SERVER	14
FIGURE 19. REDIRECTING TO DESTINATION PAGE	14

Methods of Redirection

1. DNS manager to redirect

1.1 Creating a new zone

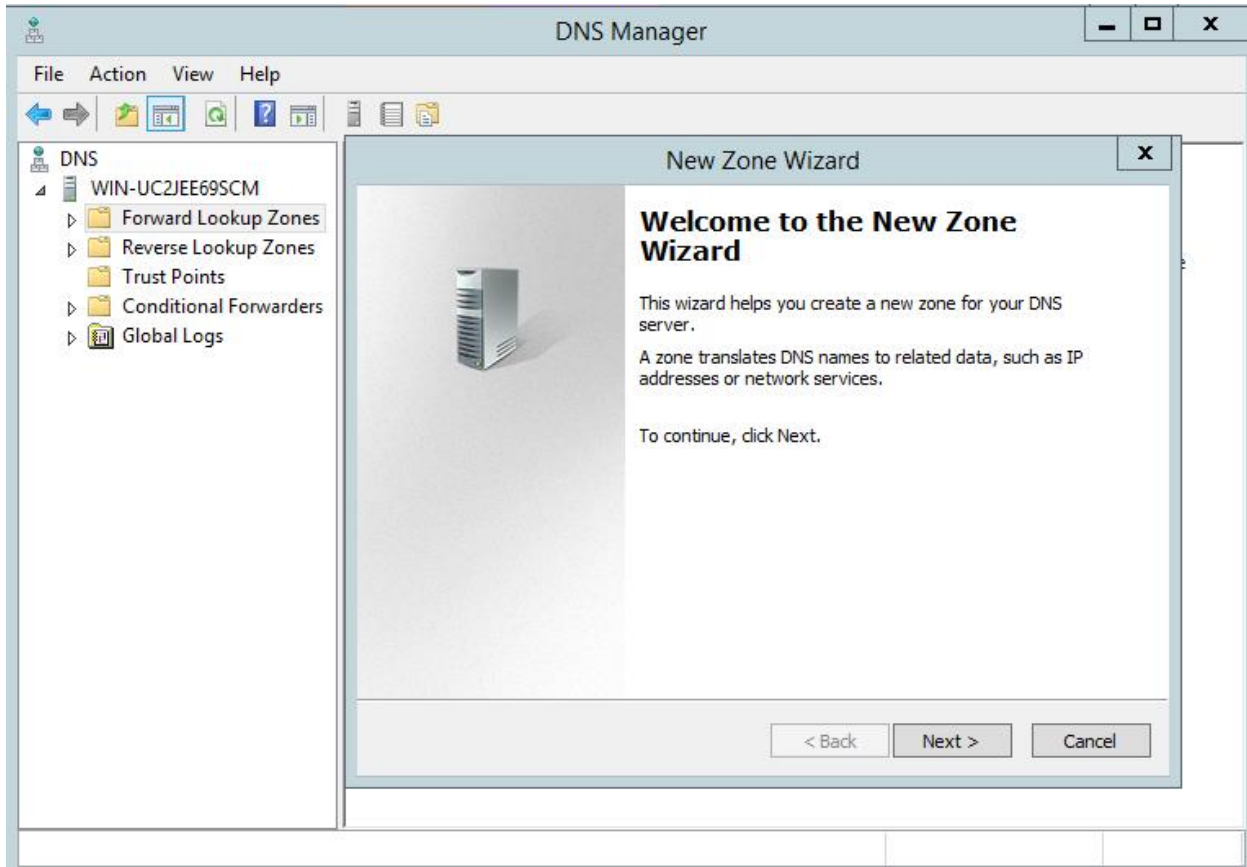


Figure 1. New Zone

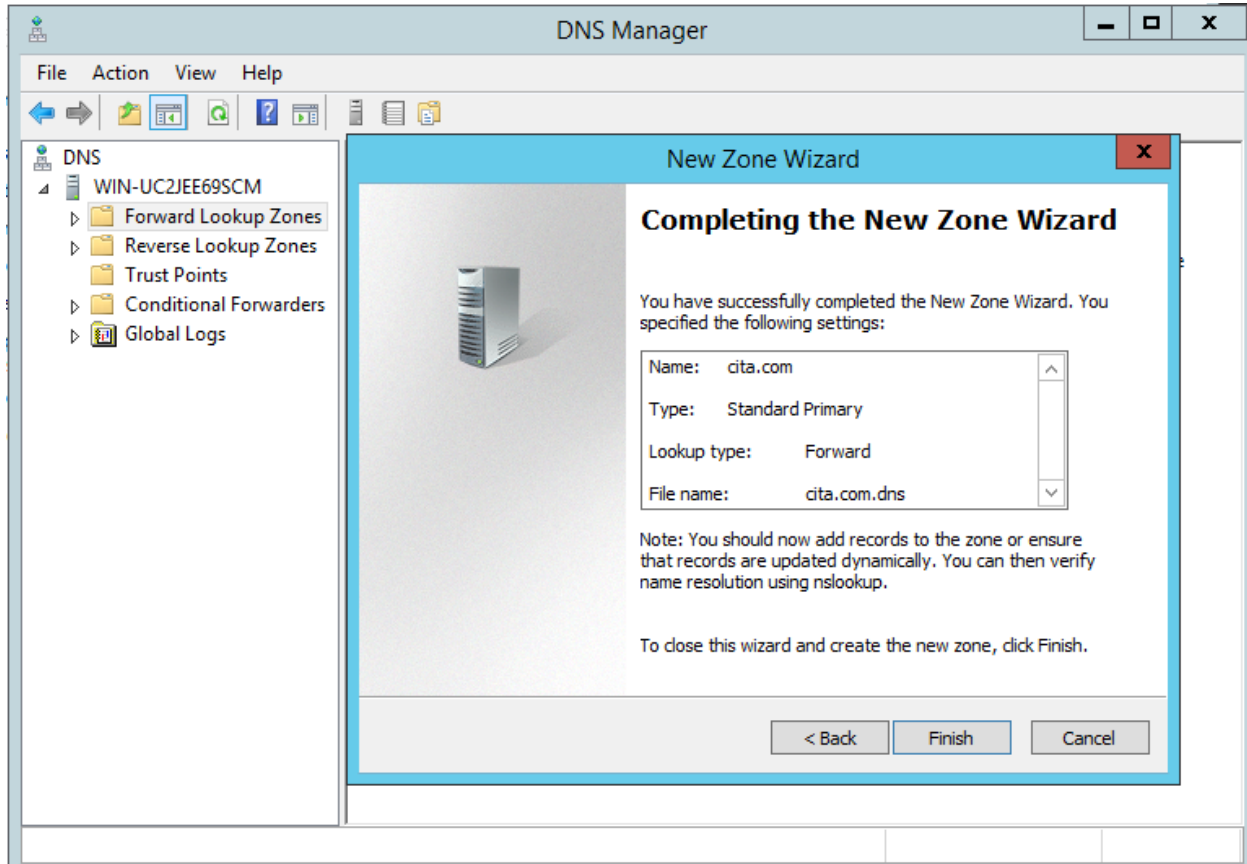


Figure 2. Completing the new zone wizard

1.2 Creating a new Host Record

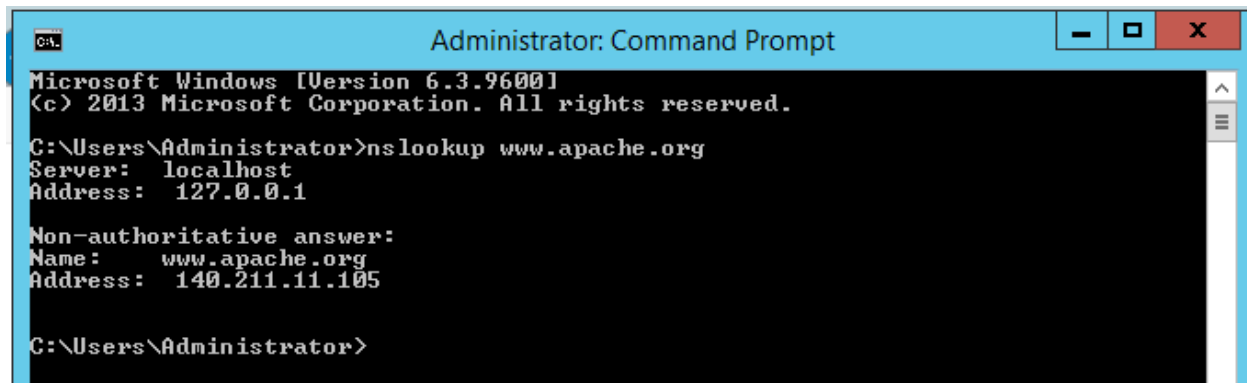


Figure 3. nslookup www.apache.org

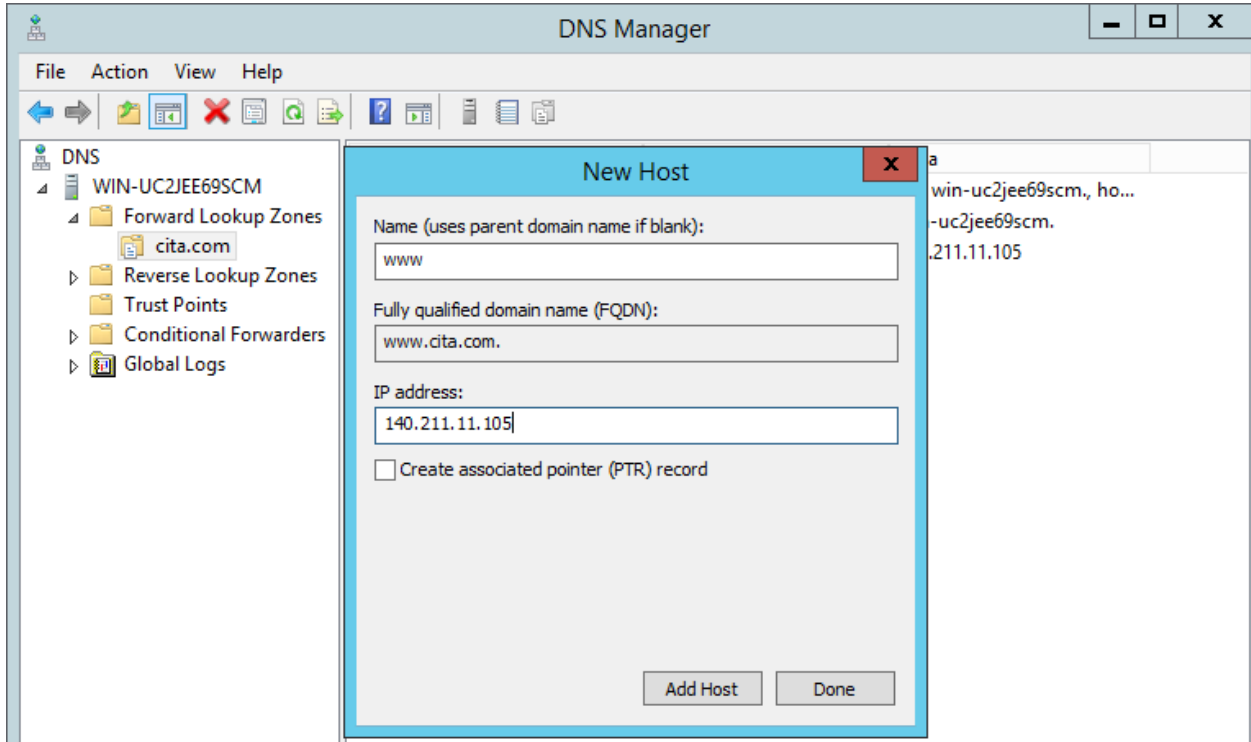


Figure 4. New Host

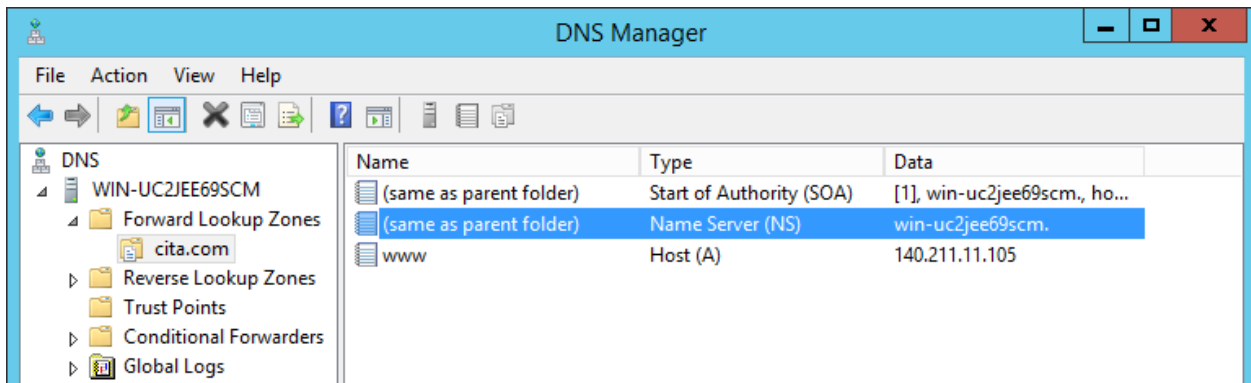


Figure 5. Record created

1.3 Restarting DNS Server and DNS Client before testing the redirection

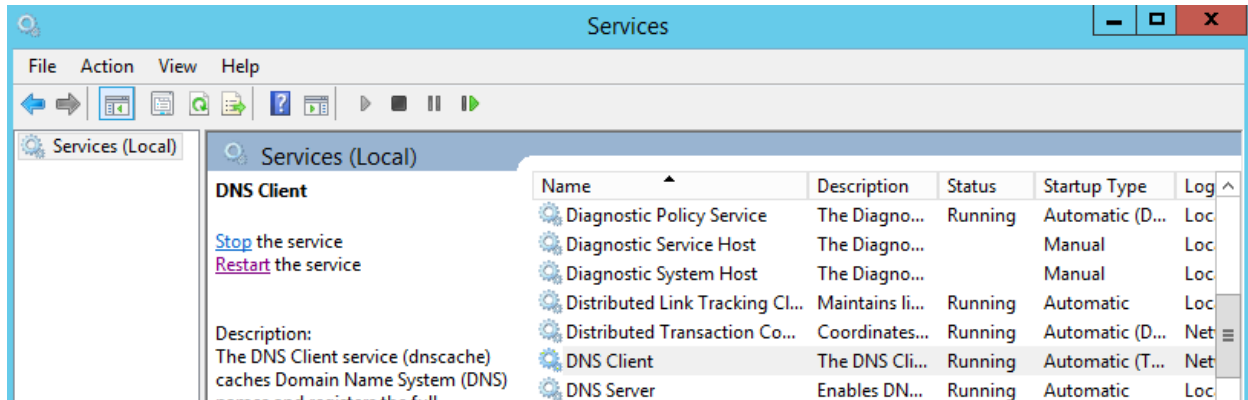


Figure 6. Restarting DNS Client and DNS Client

1.4 Redirecting www.cita.com to apache.org

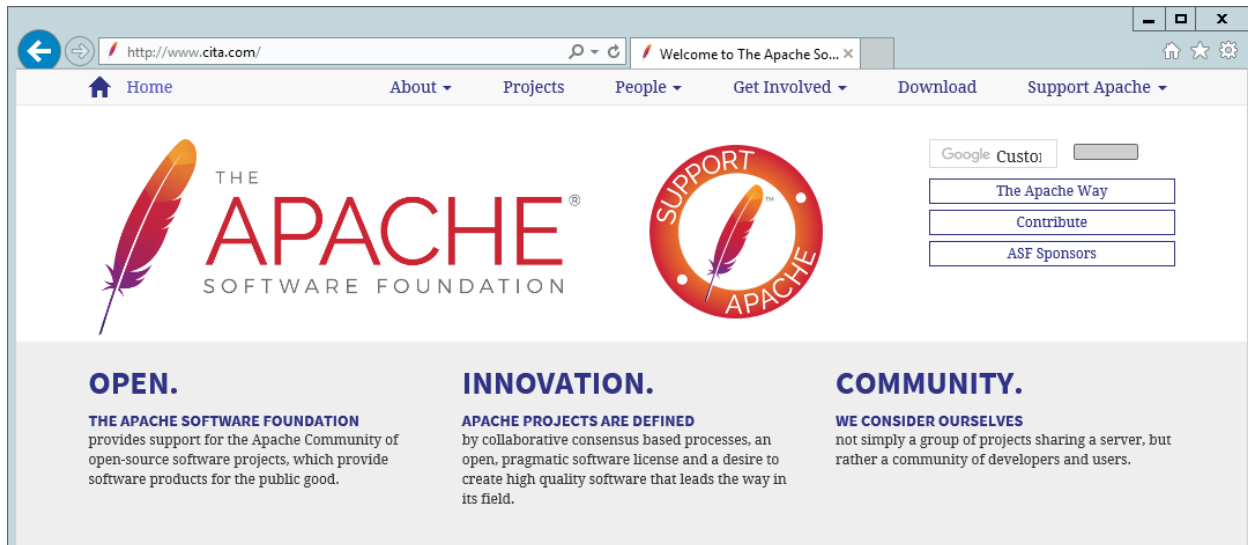


Figure 7. Redirecting to apache.org

2. Edit the Hosts File to Redirect Websites

1.5 Open Windows Hosts File

To get started editing the Windows Hosts file. Open **Windows Explorer** and click on This PC. Double-click on **C:**, then the Windows folder and scroll down the page until you reach the **System32** folder.

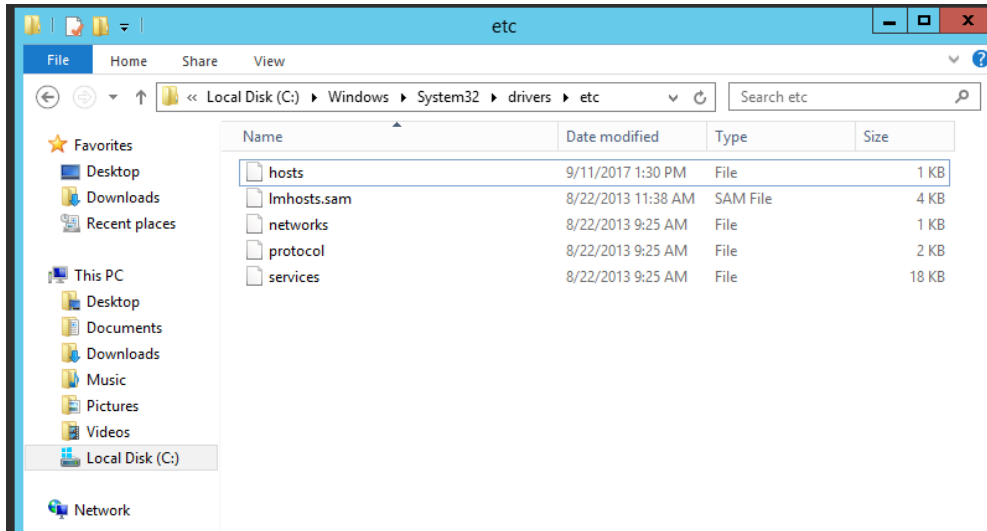


Figure 8. Select Hosts file and Open with NotePad

Inside of that folder, open **drivers** and then open **etc**. You'll now see several files, one of which is **hosts**.

```

File Edit Format View Help
# Copyright (c) 1993-2009 Microsoft Corp.
#
# This is a sample HOSTS file used by Microsoft TCP/IP for Windows.
#
# This file contains the mappings of IP addresses to host names. Each
# entry should be kept on an individual line. The IP address should
# be placed in the first column followed by the corresponding host name.
# The IP address and the host name should be separated by at least one
# space.
#
# Additionally, comments (such as these) may be inserted on individual
# lines or following the machine name denoted by a '#' symbol.
#
# For example:
#
# 102.54.94.97 rhino.acme.com # source server
# 38.25.63.10 x.acme.com # x client host
#
# localhost name resolution is handled within DNS itself.
# 127.0.0.1 localhost
# ::1 localhost
# 140.211.11.105 www.cita.com

```

140.211.11.105 is the apache website IP address which is used to point www.cita.com as if normal the address.

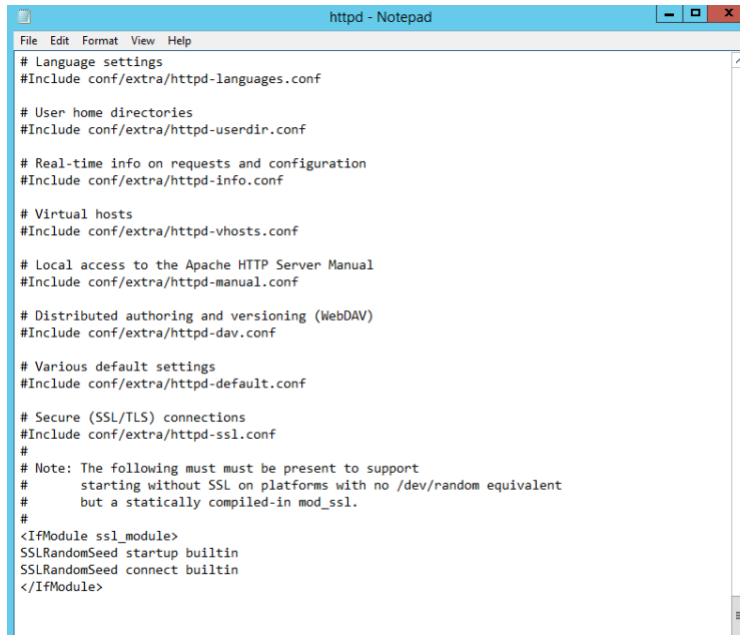
Figure 9. Adding Apache IP address and Point to Cita address



Figure 10. Redirecting to destination page

3. Refresh Meta tag and HTTP refresh header[edit]

1.1 Clear or disable the previous Virtual Host script inside httpd.conf



```
httpd - Notepad
File Edit Format View Help
# Language settings
#Include conf/extra/httpd-languages.conf

# User home directories
#Include conf/extra/httpd-userdir.conf

# Real-time info on requests and configuration
#Include conf/extra/httpd-info.conf

# Virtual hosts
#Include conf/extra/httpd-vhosts.conf

# Local access to the Apache HTTP Server Manual
#Include conf/extra/httpd-manual.conf

# Distributed authoring and versioning (WebDAV)
#Include conf/extra/httpd-dav.conf

# Various default settings
#Include conf/extra/httpd-default.conf

# Secure (SSL/TLS) connections
#Include conf/extra/httpd-ssl.conf
#
# Note: The following must be present to support
#       starting without SSL on platforms with no /dev/random equivalent
#       but a statically compiled-in mod_ssl.
#
<IfModule ssl_module>
SSLRandomSeed startup builtin
SSLRandomSeed connect builtin
</IfModule>
```

Figure 11. Cleared httpd.conf

1.2 Go to htdocs folder

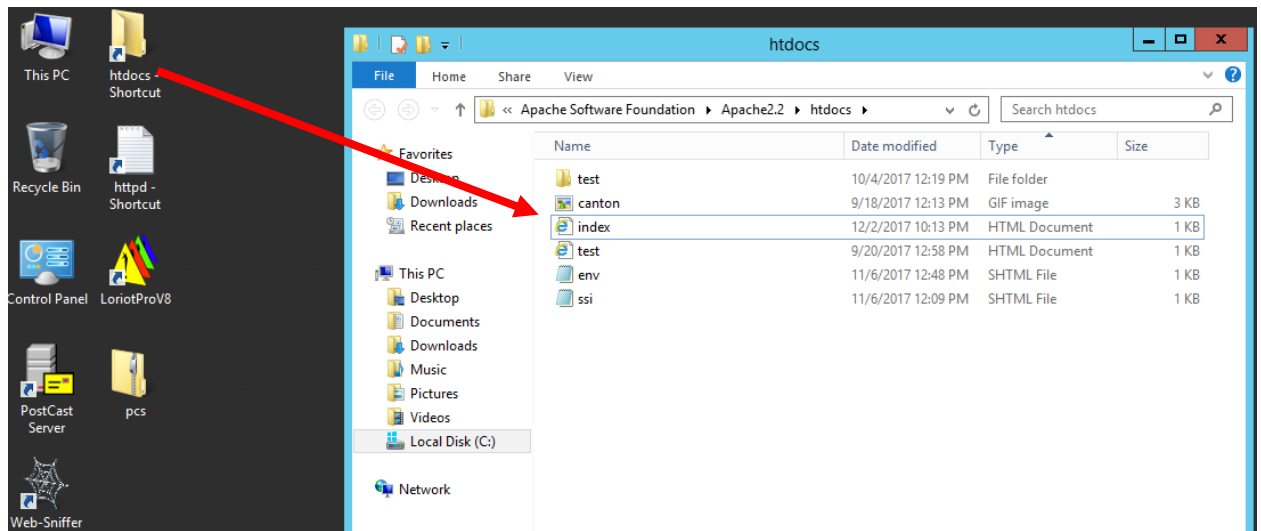


Figure 12. Click index file and edit with Notepad

1.3 Edit index.html file by inserting the script redirect

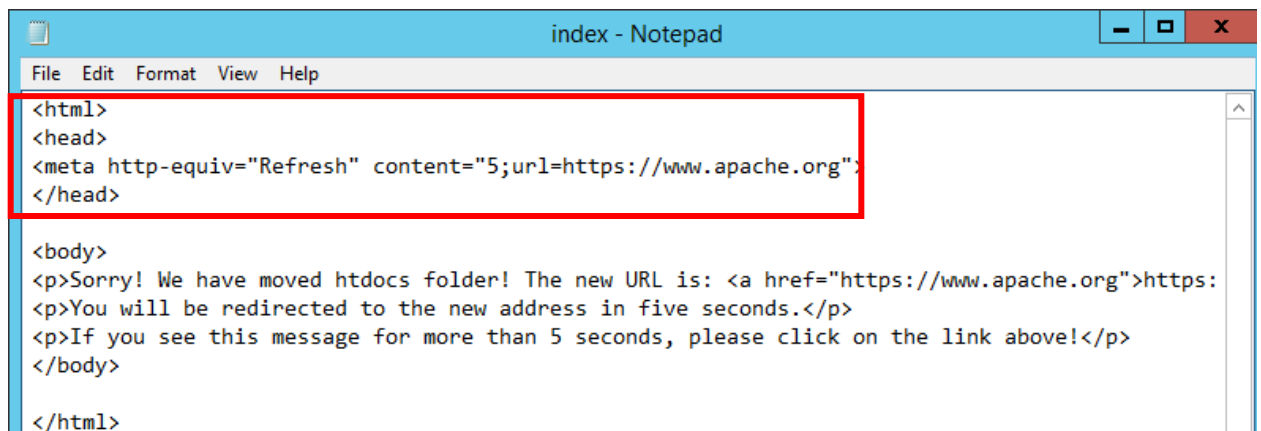


Figure 13. Inserting Meta tag and HTTP refresh header

1.4 Testing the by typing www.cita.com/

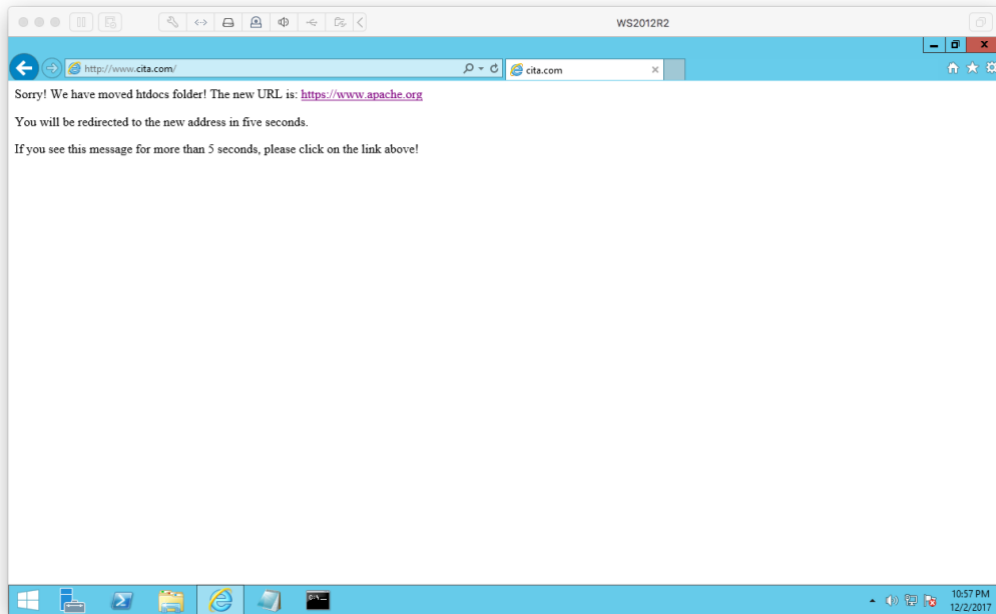


Figure 14. redirecting the index page to apache.

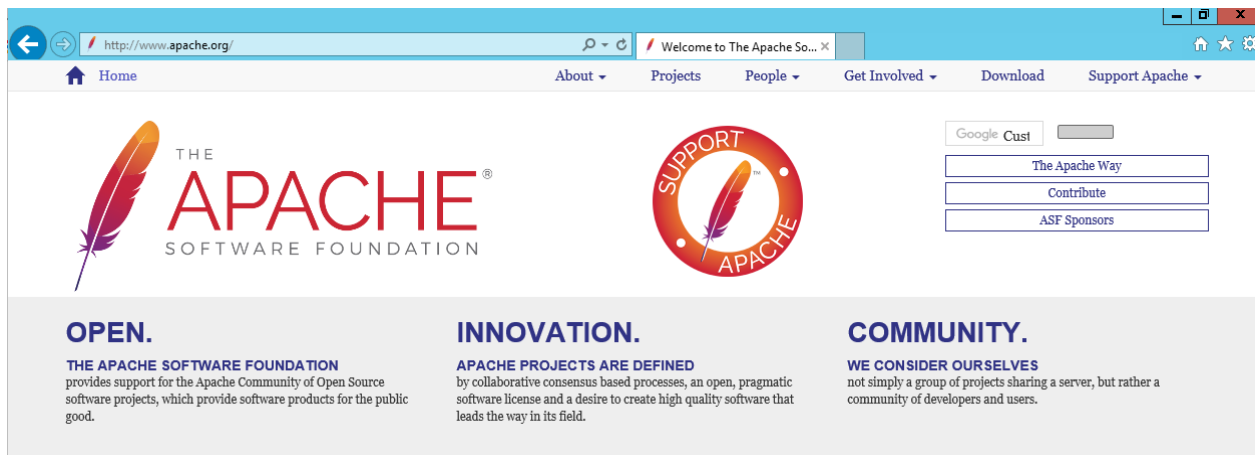
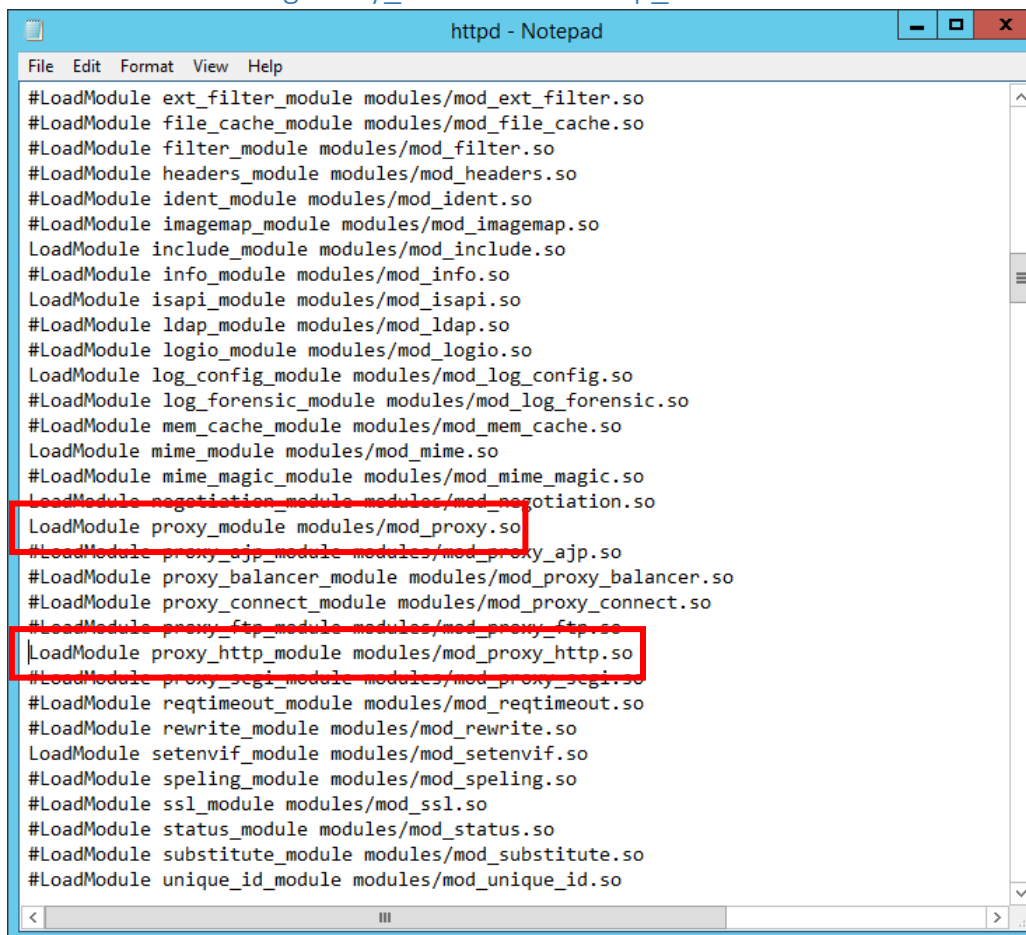


Figure 15. Redirected after 5 seconds

4. Virtual_host and mod_proxy

1.1 Enabling Proxy_modules and Http_modules



```

httpd - Notepad
File Edit Format View Help
#LoadModule ext_filter_module modules/mod_ext_filter.so
#LoadModule file_cache_module modules/mod_file_cache.so
#LoadModule filter_module modules/mod_filter.so
#LoadModule headers_module modules/mod_headers.so
#LoadModule ident_module modules/mod_ident.so
#LoadModule imagemap_module modules/mod_imagemap.so
LoadModule include_module modules/mod_include.so
#LoadModule info_module modules/mod_info.so
LoadModule isapi_module modules/mod_isapi.so
#LoadModule ldap_module modules/mod_ldap.so
#LoadModule logio_module modules/mod_logio.so
LoadModule log_config_module modules/mod_log_config.so
#LoadModule log_forensic_module modules/mod_log_forensic.so
#LoadModule mem_cache_module modules/mod_mem_cache.so
LoadModule mime_module modules/mod_mime.so
#LoadModule mime_magic_module modules/mod_mime_magic.so
LoadModule negotiation_module modules/mod_negotiation.so
LoadModule proxy_module modules/mod_proxy.so
#LoadModule proxy_ajp_module modules/mod_proxy_ajp.so
#LoadModule proxy_balancer_module modules/mod_proxy_balancer.so
#LoadModule proxy_connect_module modules/mod_proxy_connect.so
LoadModule proxy_ftp_module modules/mod_proxy_ftp.so
LoadModule proxy_http_module modules/mod_proxy_http.so
#LoadModule proxy_scgi_module modules/mod_proxy_scgi.so
#LoadModule reqtimeout_module modules/mod_reqtimeout.so
#LoadModule rewrite_module modules/mod_rewrite.so
LoadModule setenvif_module modules/mod_setenvif.so
#LoadModule spelling_module modules/mod_spelling.so
#LoadModule ssl_module modules/mod_ssl.so
#LoadModule status_module modules/mod_status.so
#LoadModule substitute_module modules/mod_substitute.so
#LoadModule unique_id_module modules/mod_unique_id.so

```

Figure 16. Enable LoadModule Proxy and http LoadModule

1.2 Virtual_host and mod_proxy script code

```

<VirtualHost *:*>
    ProxyPreserveHost On
    ProxyPass      "/" "http://140.211.11.105/"
    ProxyPassReverse "/" "http://140.211.11.105/"
    ServerName www.cita.com
</VirtualHost>

```

Figure 17. proxy server configuration script

1.3 Restart the Apache and Test

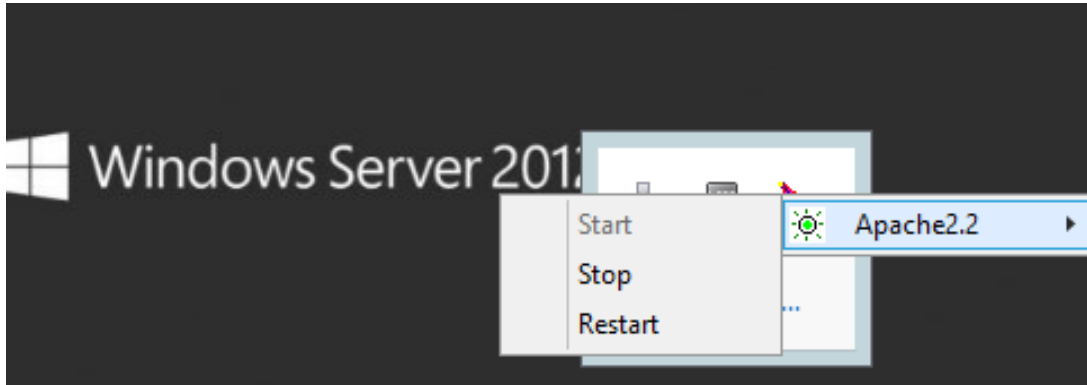


Figure 18. Restarting apache server

Testing the by typing www.cita.com/

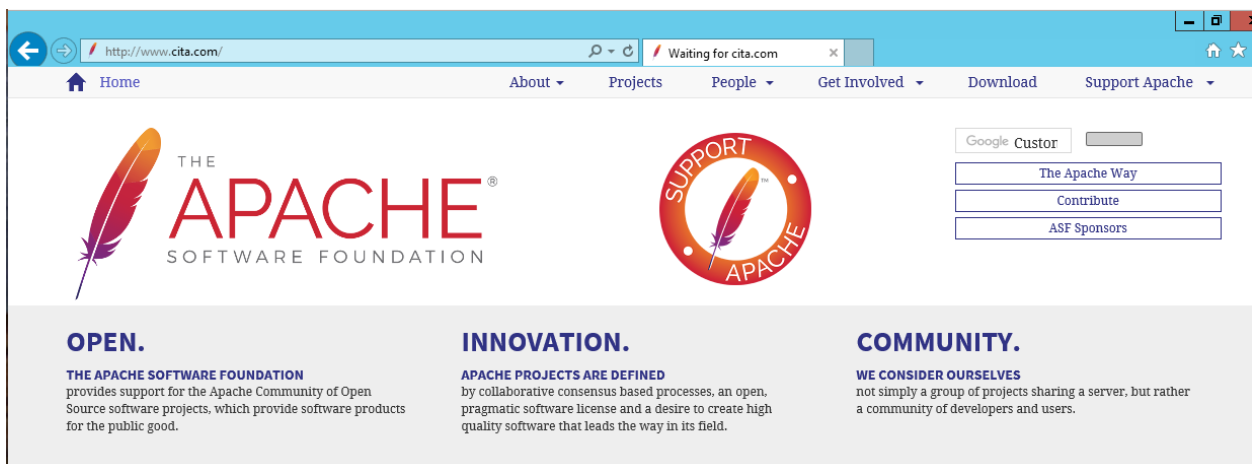


Figure 19. Redirecting to destination page